

# Simple Instructions for the **SCRIPTED VERSION** OF **AUDIT BASELINE V 4.0.0.1 - a very fast Software Inventory Tool**

This Software Inventory application ONLY runs using Command Line Syntax as follows -

**C:\Audit\_Baseline.exe /s /D d: /N d:\swauditor**

**/s** means run silent and is mandatory

**/D** means nominate the drive letter to use for temporary file creation (we nominated d:)

**/N** means nominate the Name of the folder to store the results (Note: A new folder by the name listed after /N will be automatically created if it doesn't already exist)

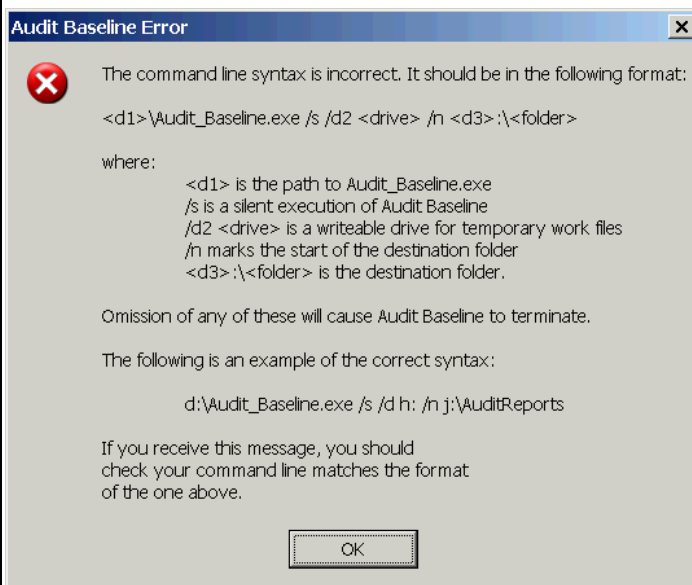
**NOTE:** If you are unable to use the c:\drive to read/write restrictions then use the following syntax where h:\ is the users' personal share (substitute whatever your naming convention is for this drive letter)

eg; **h:\Audit\_Baseline.exe /s /D h: /N h:\swauditor**

## **NOTE: SYNTAX / GUI ERROR MESSAGE**

If you make an error in syntax (or try and run the program as an executable from the Icon or a folder in Windows) the program will abort with the following message screen.

If you also try and execute the program by clicking on the exe file in Windows then the message will also occur. This program CAN ONLY be run using Start/Run or shelling to DOS from Windows.



**The software runs on Win 98 (Fat 32); Win NT (NTFS/FAT 32); Windows 2000 (NTFS/FAT 32) and Win XP/ Win XPPro machines (NTFS/FAT 32)**

**NOTE: FAT 16 systems are unsupported and will not work with this software.**

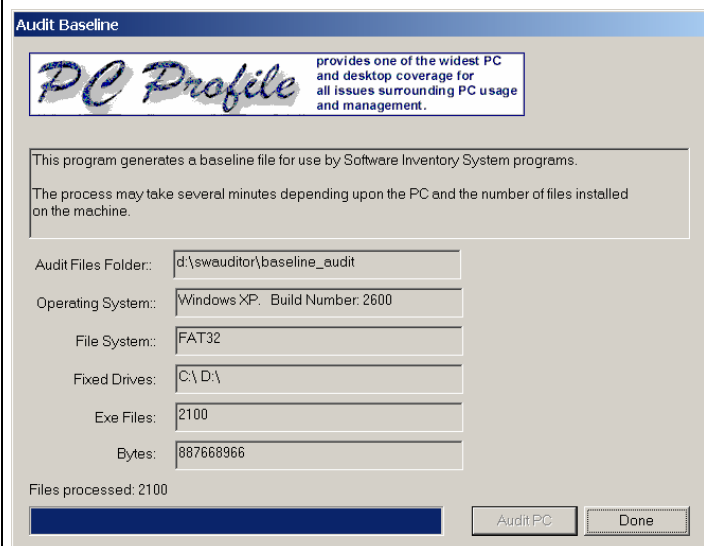
## **AUDIT COMPLETED**

When the node audit is completed the program will show the following display at the users local node which will identify to the user that an audit has been conducted and the location of the audit files, in this case the folder located at d:\swauditor\baseline\_audit

2 files (CSV and RTF) are generated for each audit in the following format `yyyymmdd_<nodename>`

eg; 20040527\_ROBNOTEBOOK.xls  
20040527\_ROBNOTEBOOK.rtf

**The audit time will take around 15 seconds to be completed for each PC!**



*Rob Harmer Consulting Services Pty Ltd* A.B.N. 77 053 134 400

P.O. Box 196 Modbury North SA 5092 Please note our time zone is GMT +0930

**Mobile phone +61 8 (0) 418 817 955 Facsimile + 61 8 8265-1961 e-mail [pcprofile@internode.on.net](mailto:pcprofile@internode.on.net)**

<http://www.pcprofile.com> Version 4 programmed by Secrett Systems

### **SOFTWARE INVENTORY SYSTEM**

- Winner of COMTEC 94 SA Information Technology **PRODUCT OF THE YEAR**
- 1999 Micro Small Business Network IT Product of the Year